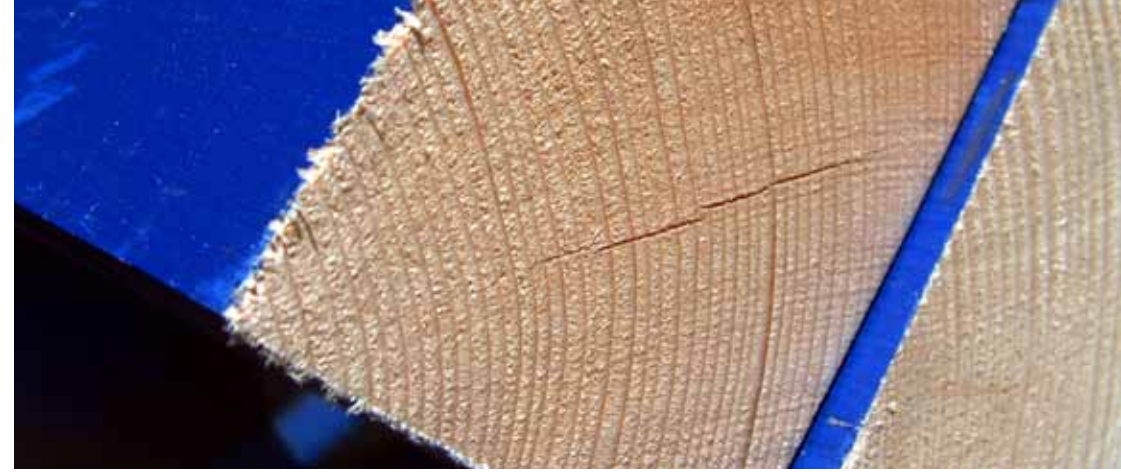


Resource page - Wood



Wood and Wood Based Panels

With the introduction of plastics to the sign industry, timber use has been drastically reduced. However it is still the preferred choice for many applications such as hardwood plaques for mounting brass plates, traditional looking signboards and hoarding panels. Advances made in connection with timber related products such as preservatives, finishes, glues and types of panels have enabled specifiers and end users to be more confident. Broad-leafed trees produce hardwood whereas softwoods come from coniferous trees, but not all hardwoods are hard, nor are softwoods all soft; Balsa wood is in fact a hard wood. Sheet material used for exterior applications, such as Birch faced exterior grade plywood, marine ply or exterior grade MDF (medium density fibreboard) must be coated with some form of preservation. This comes in the form of stains and varnishes paint

coatings and so called 'microporous' coatings.

A standard for the application of paint coating would be thus:

- 1 coat aluminium primer or similar
- 1 coat undercoat
- 2 coats of gloss

Special attention must be paid to edges on all sheeted material, as these are most prone to water and insect migration. The labour costs involved in producing such a product can be quite high, but there is no point in attempting to 'cut corners' on these guidelines as it will result in poor performance and wasted time and money.

Flexible MDF can be formed into shapes for use in areas such a shopfitting and exhibition display. The shapes can be laminated with flexible coloured laminates, you can apply veneer or paint to any colour.